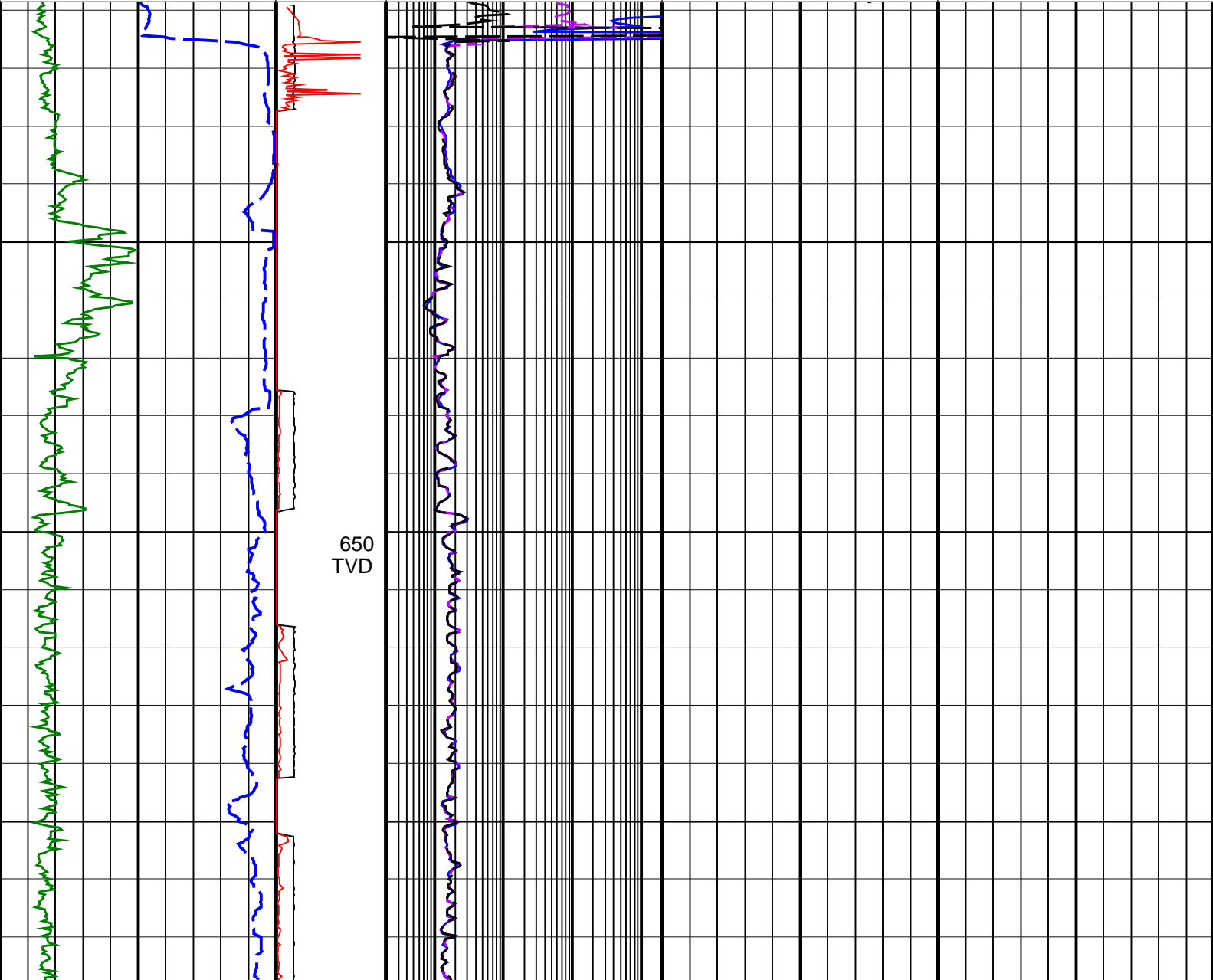
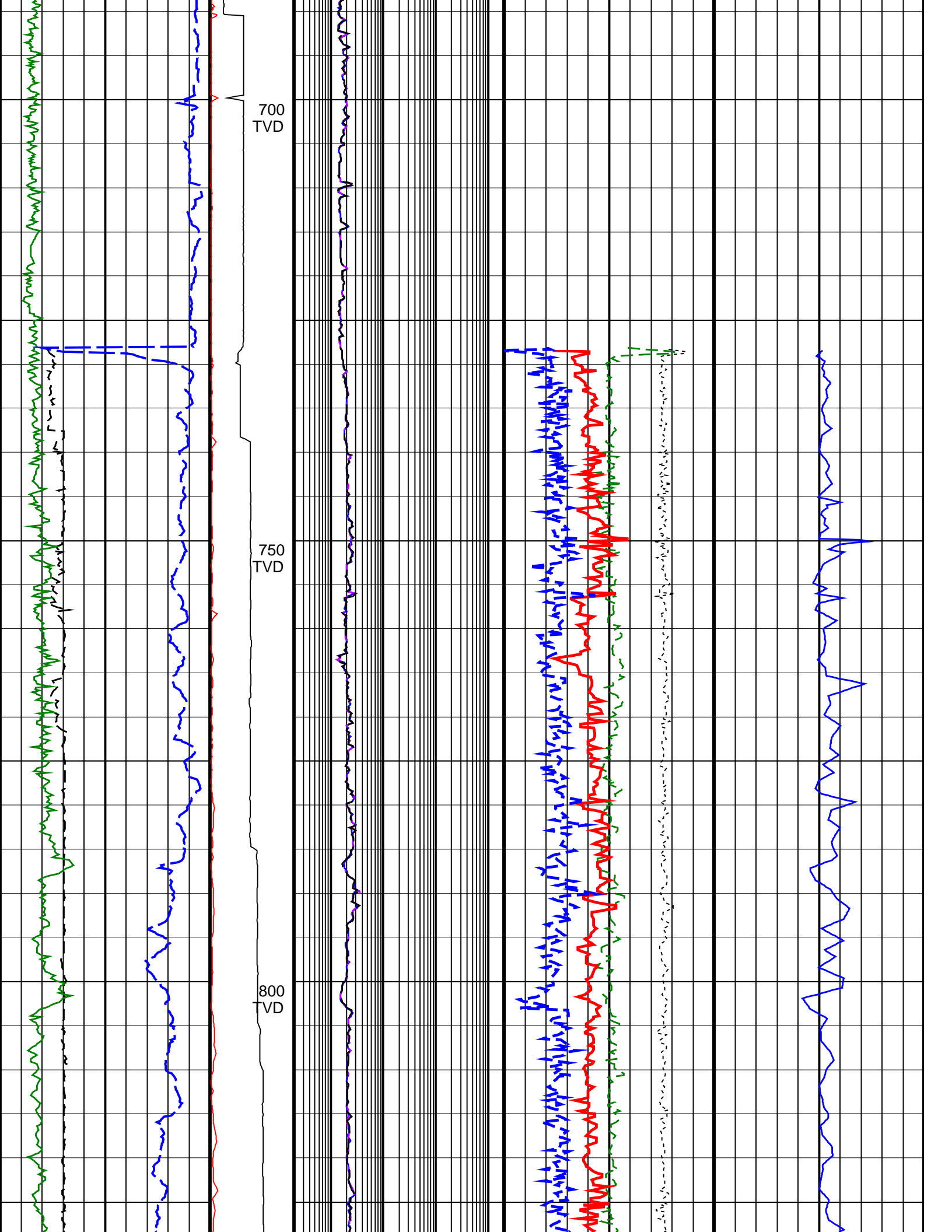


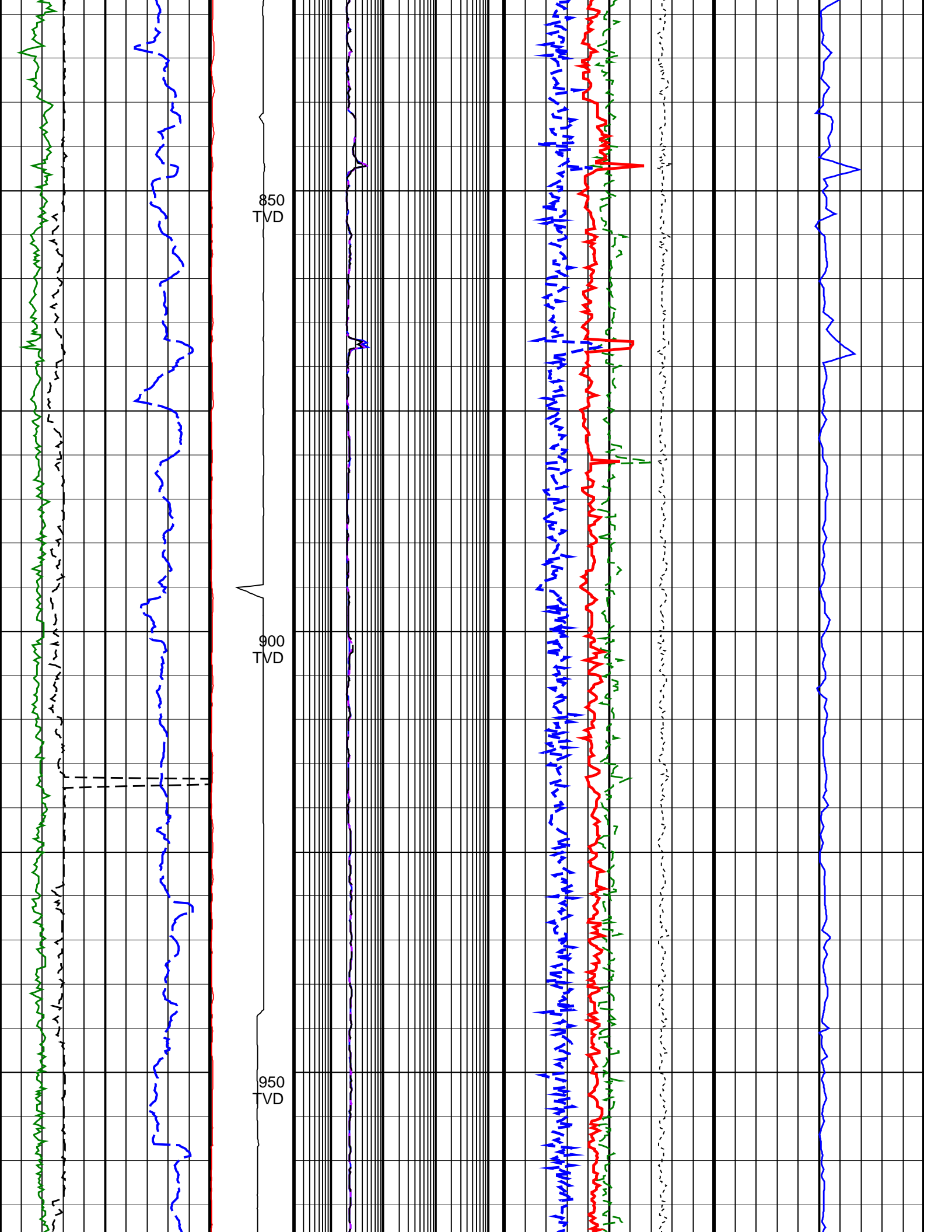
CBA-A19a LWD VISION RT 500TVD

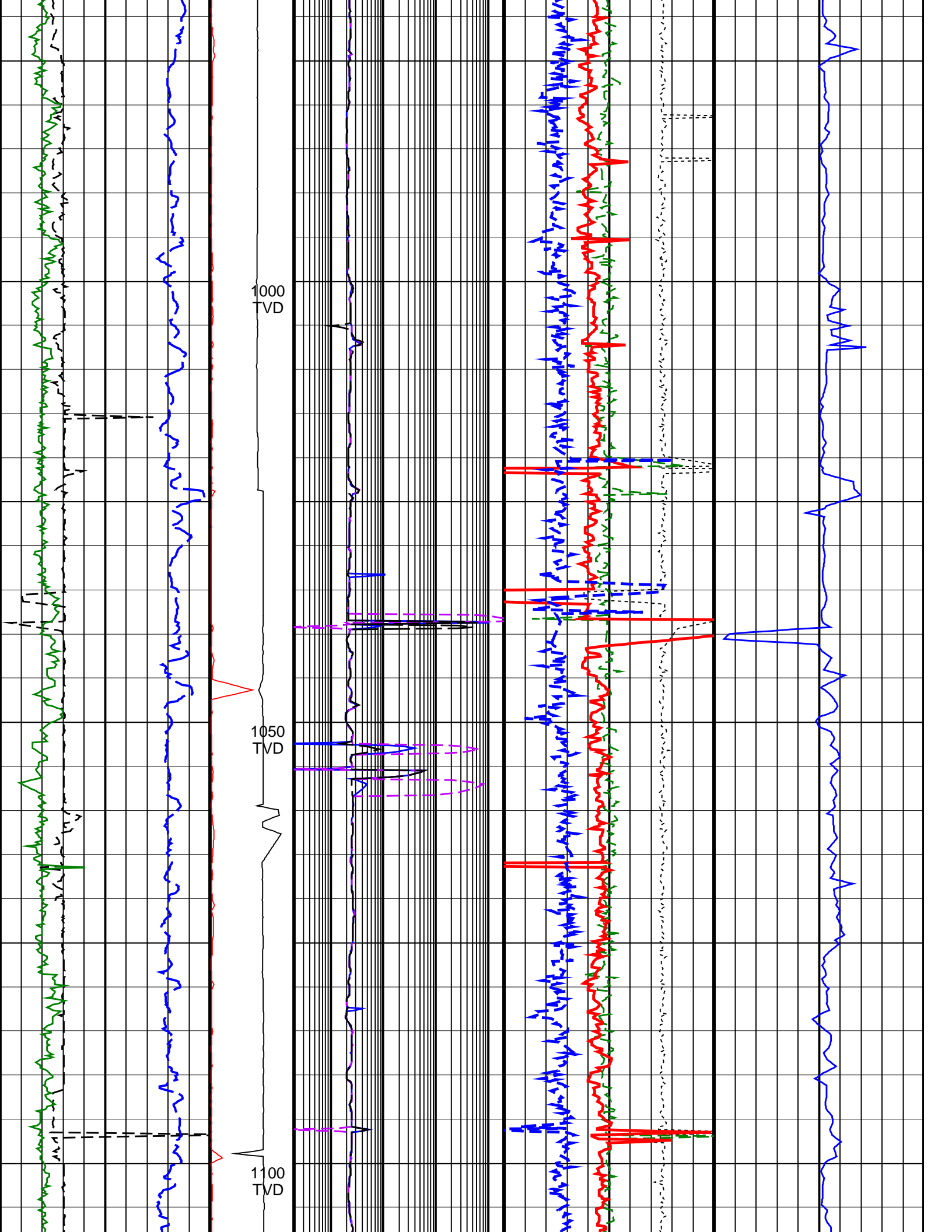
Format: VISION SERVICE RT 500TVD Vertical Scale: 1:500 Graphics File Created: 28-Apr-2009 04:11

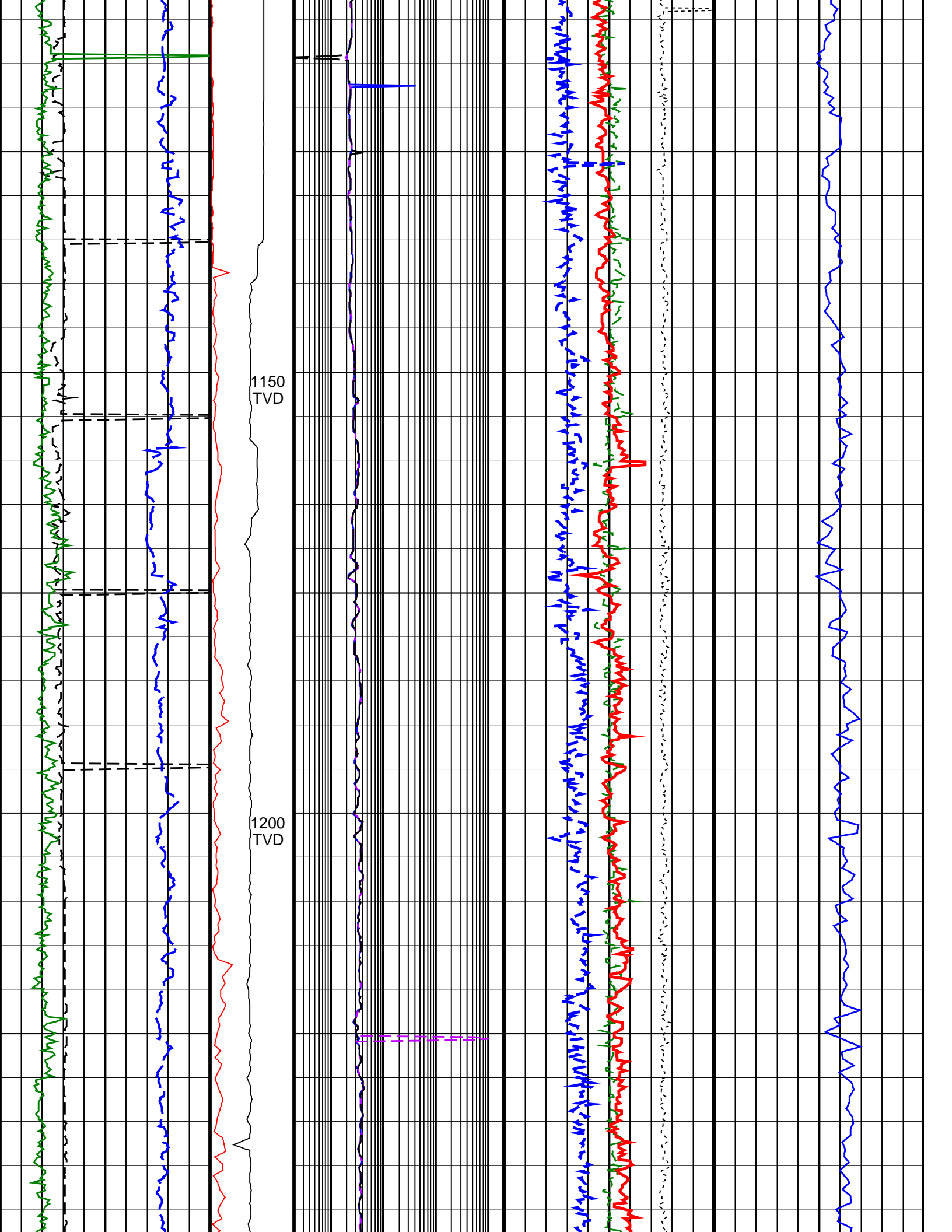
				Thermal Neutron Porosity, Real-Time (TNPH_ADN_RT) 45 (PU) -15	
ARC Gamma Ray, Real-Time (ARC_GR_RT) 0 (GAPI) 200		ARC BHCorr Phase-Shift Resistivity 40-in. at 2 MHz, Real-Time (P40H_RT) 0.2 (OHMM) 2000		Bulk Density, Bottom, Real-Time Computed Downhole (ROBB_DH_RT) 1.85 (G/C3) 2.85	
Average Borehole Diameter, Real-Time (ADIA_ADN_RT) 6 (IN) 16		MWD Collar RPM (CRPM_RT) (RPM) 0 250		ARC BHCorr Phase-Shift Resistivity 28-in. at 2 MHz, Real-Time (P28H_RT) 0.2 (OHMM) 2000	
ROP*5 (ROP5) (M/HR) 200 0		PKPK_RPM (Stick_RT) (RPM) 0 500		ARC BHCorr Phase-Shift Resistivity 16-in. at 2 MHz, Real-Time (P16H_RT) 0.2 (OHMM) 2000	
				Bulk Density Correction, Bottom, Real-Time Computed Downhole (DRHB_DH_RT) -0.75 (G/C3) 0.25	
				Delta-T Compressional, Real-Time (DTCO_RT) 600 (US/M) 100	

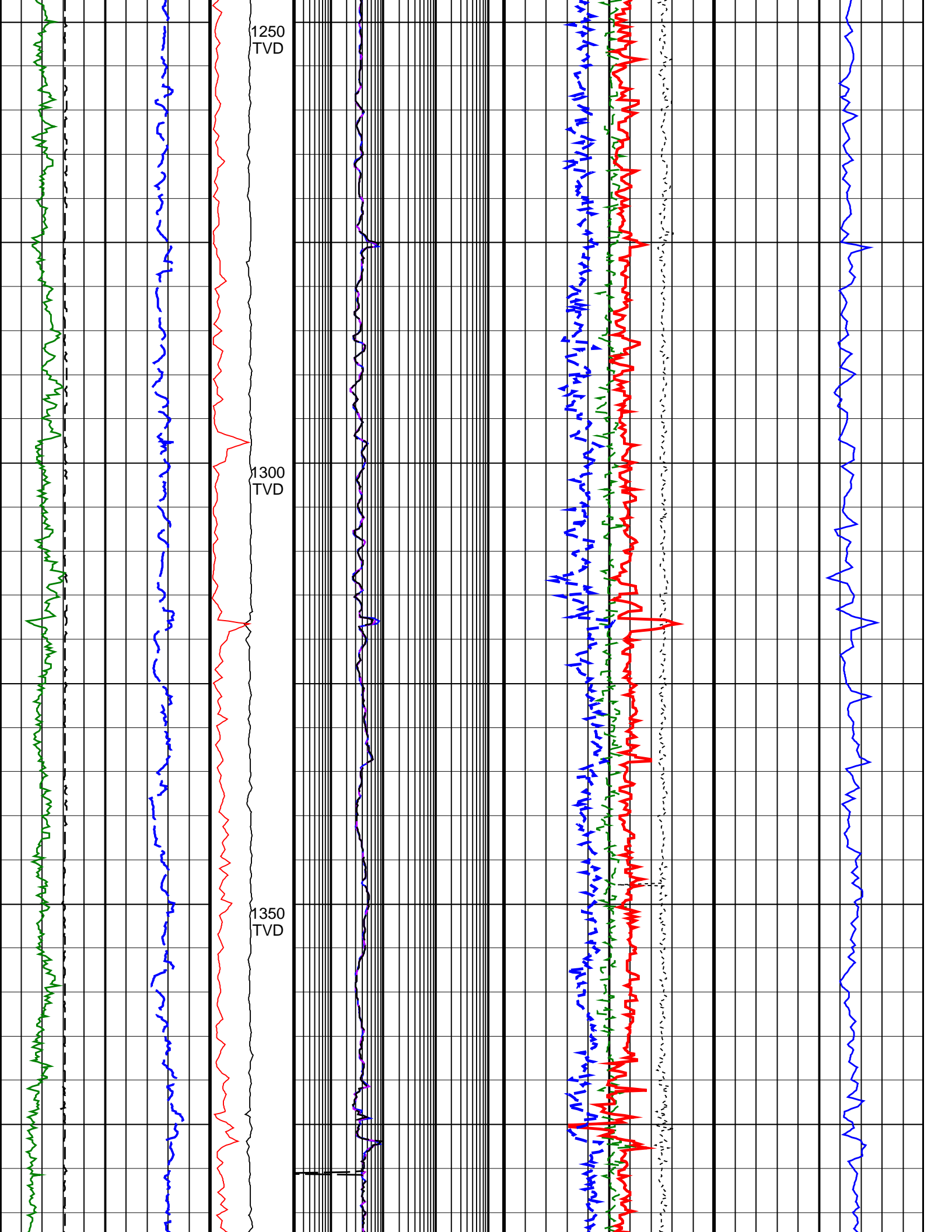


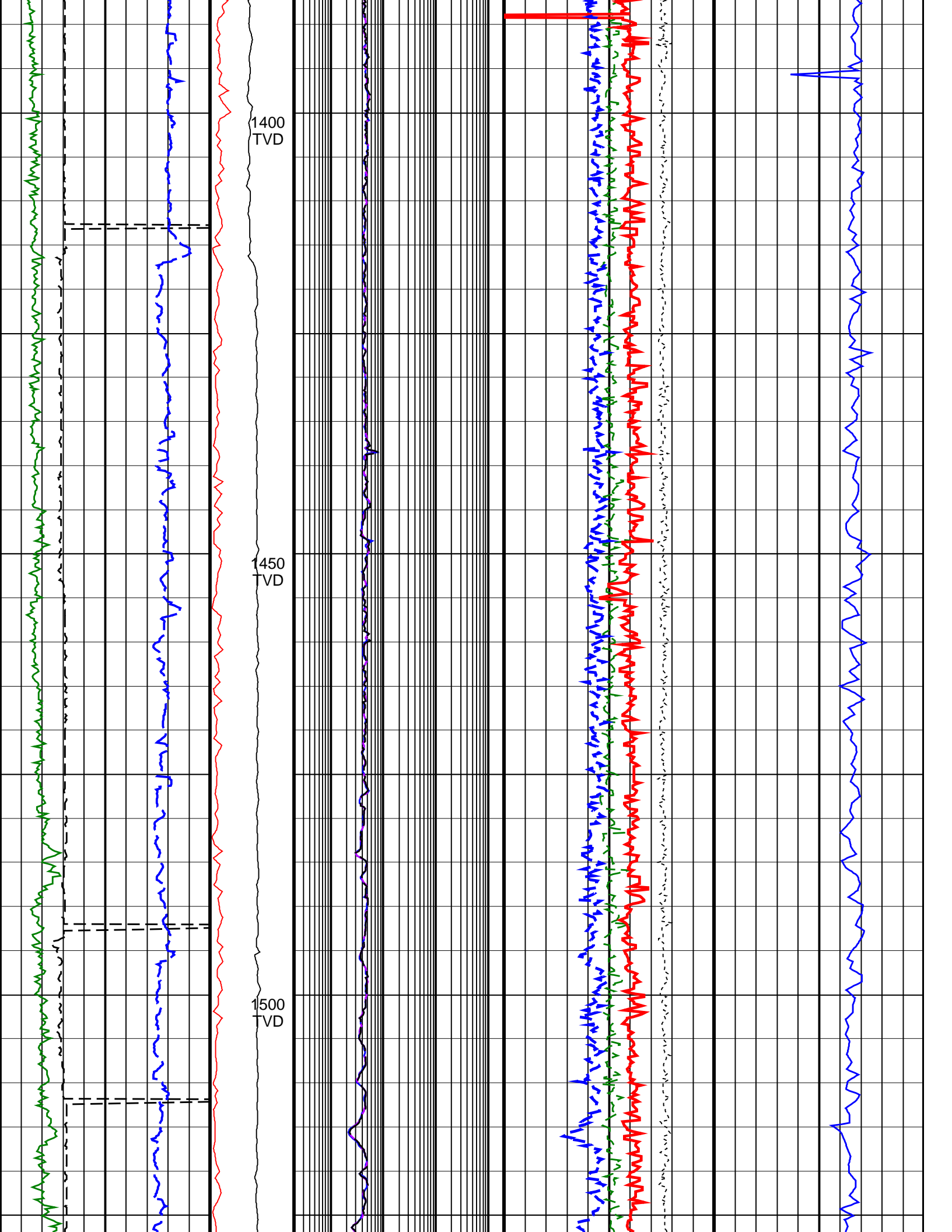


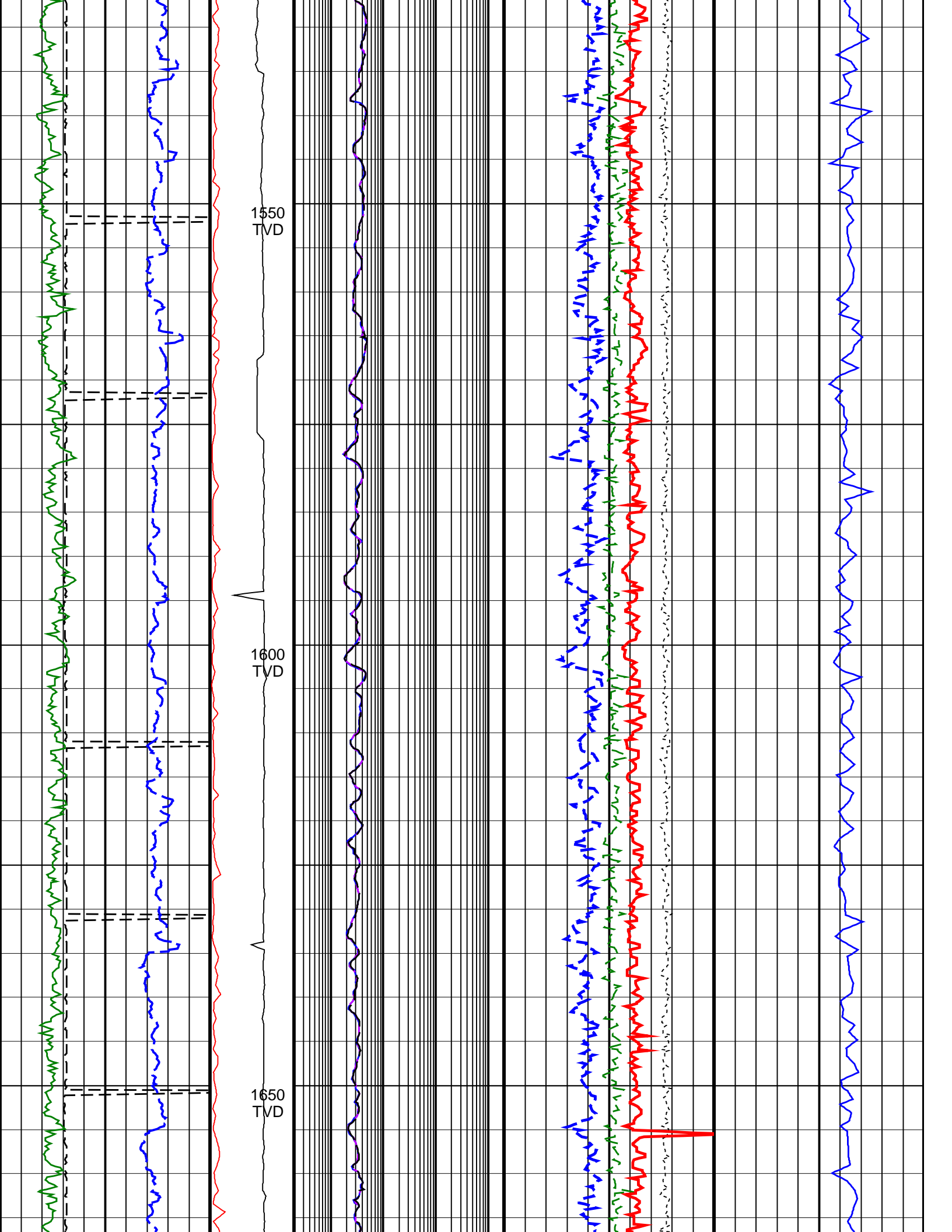


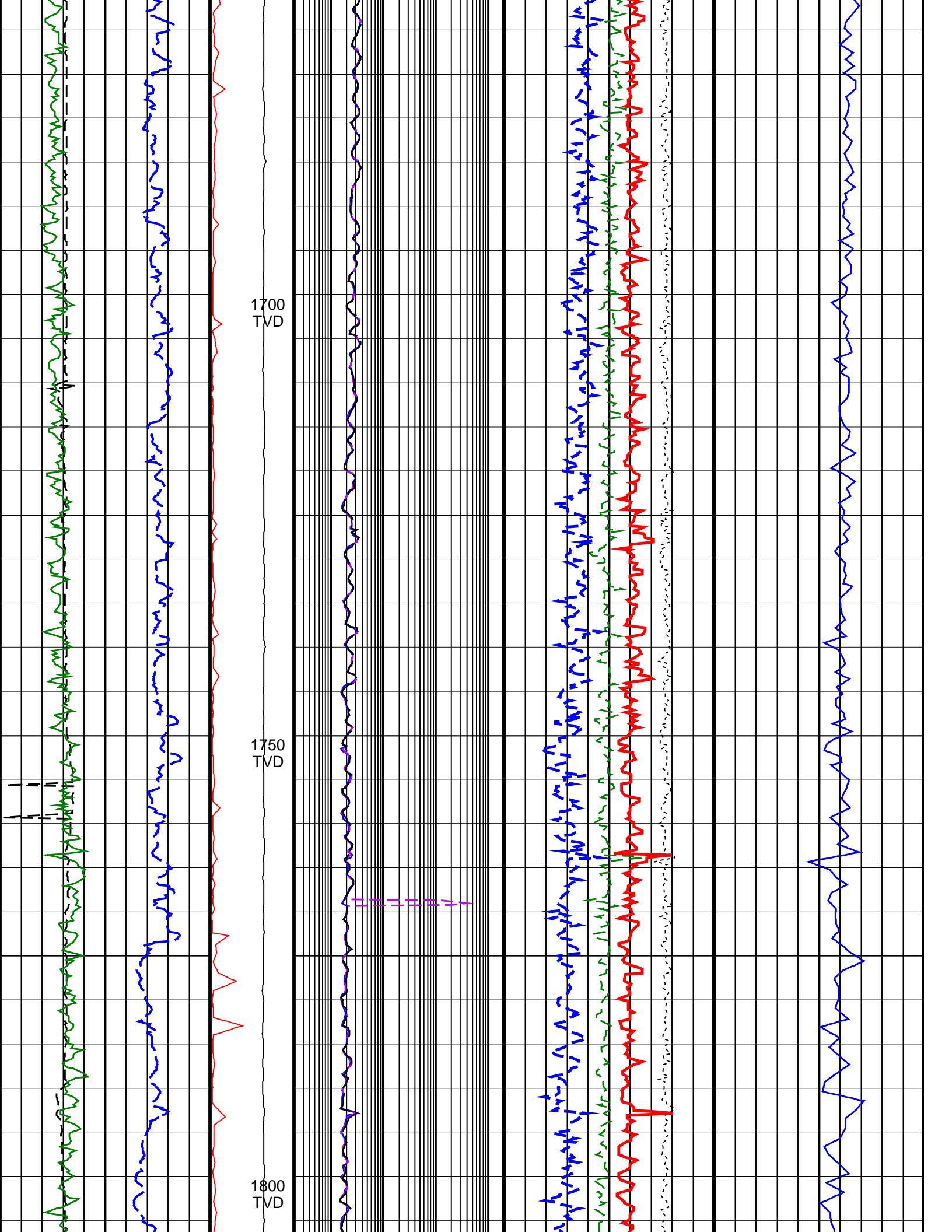


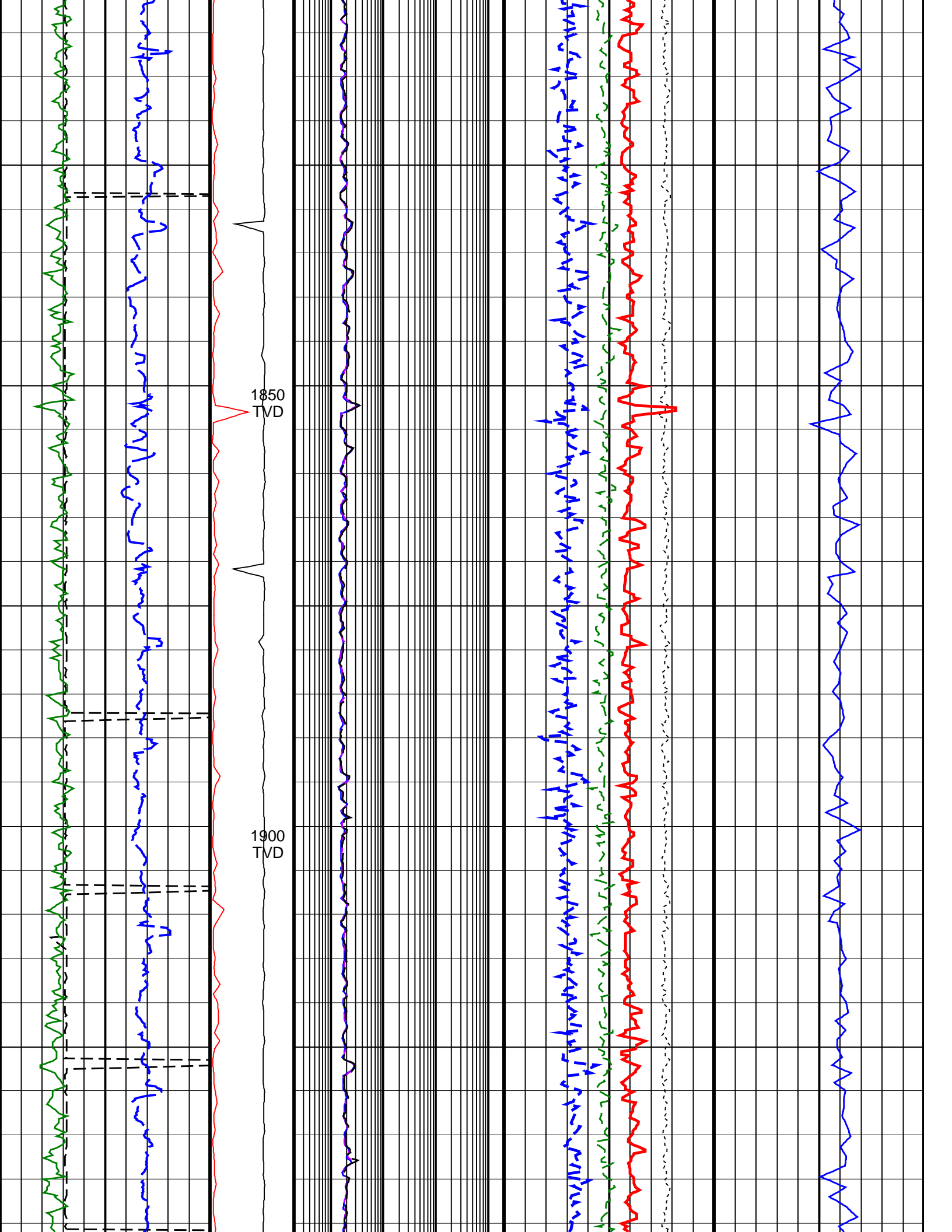


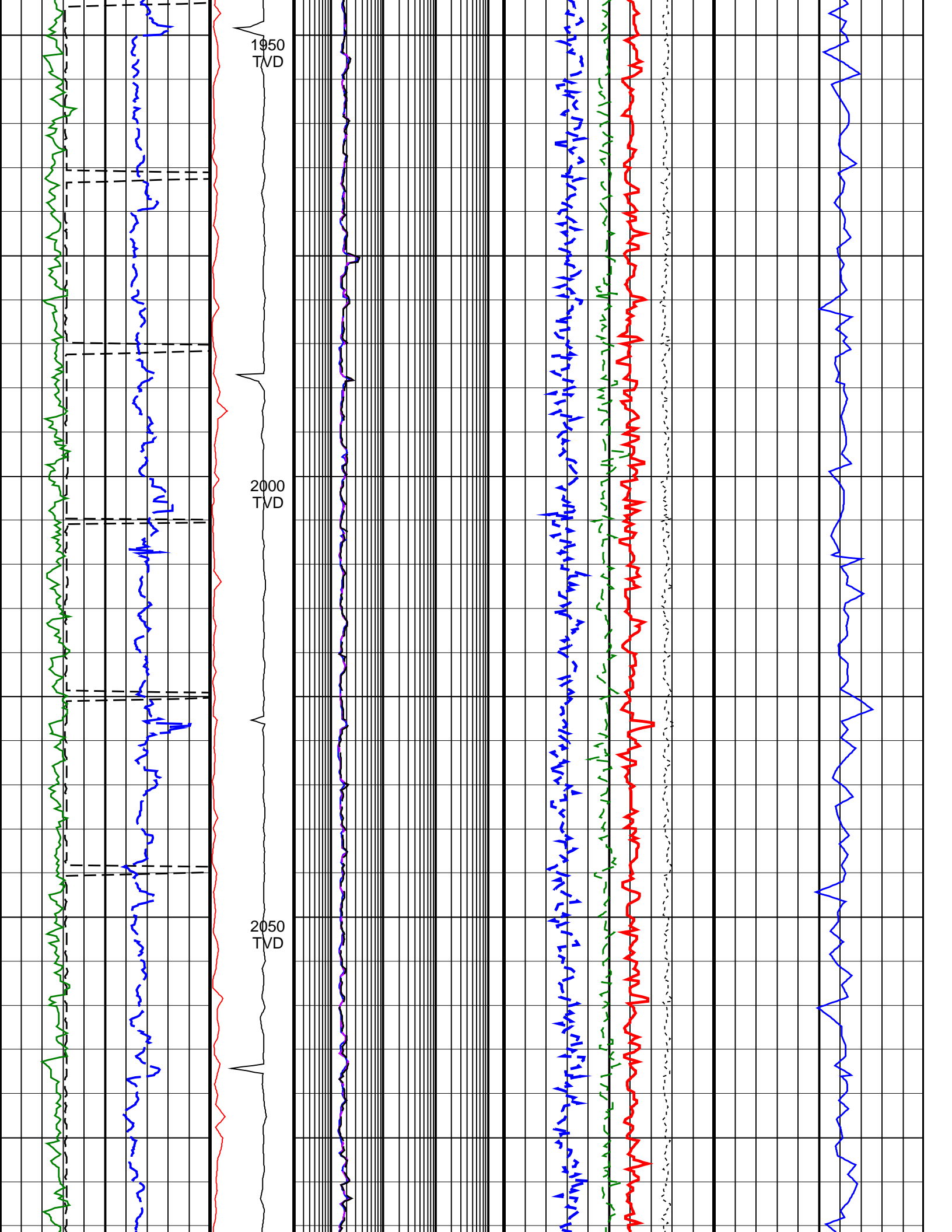


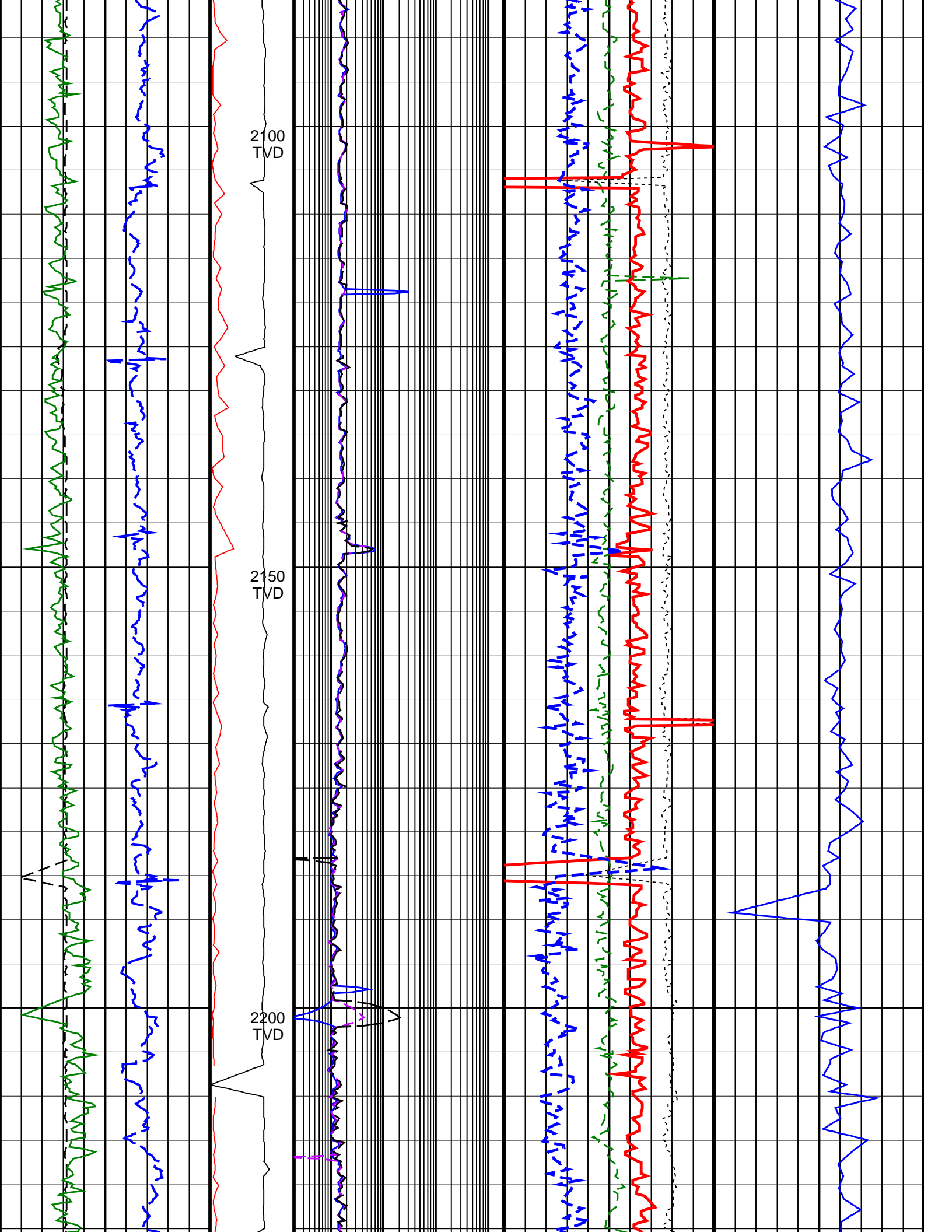


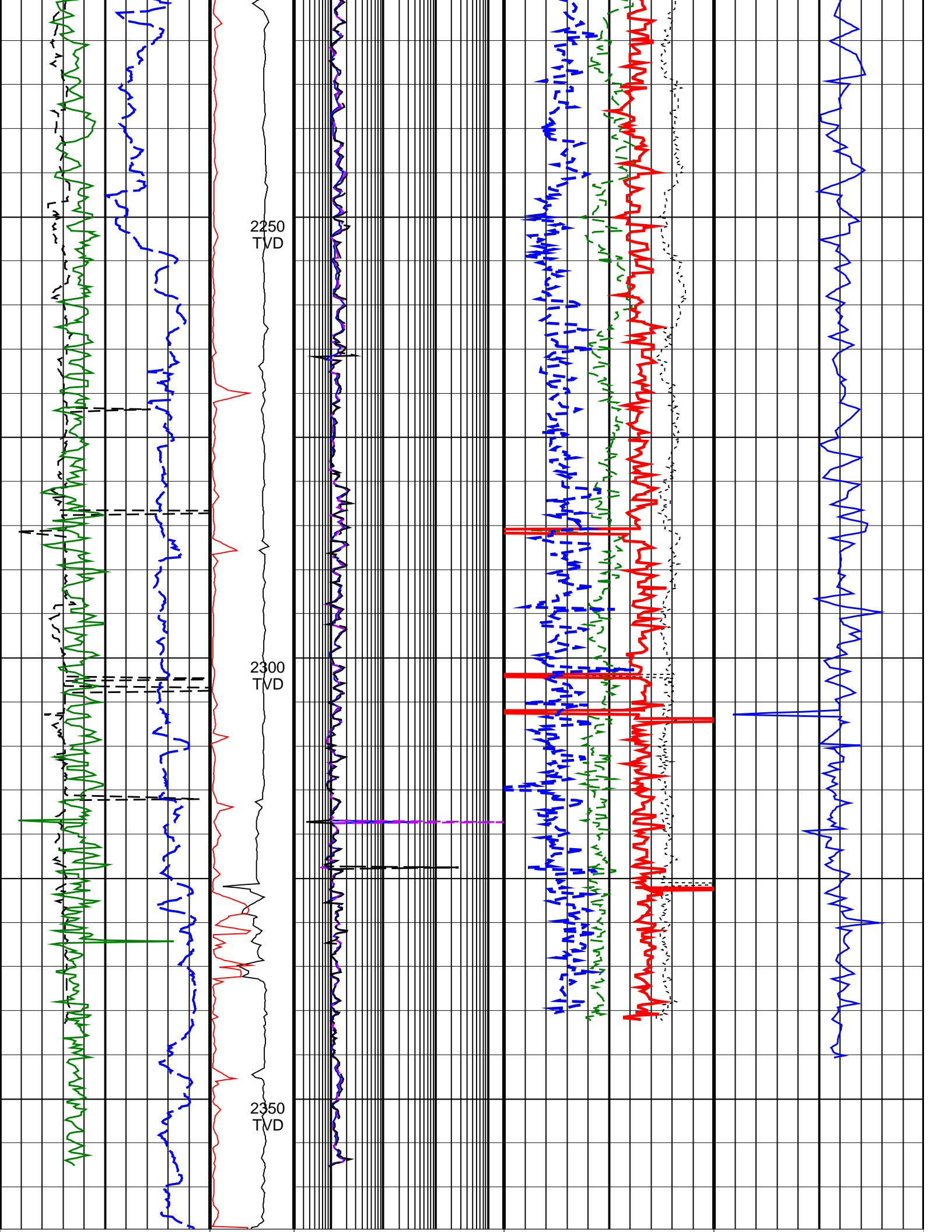












200	<u>ROP*5 (ROP5)</u> (M/HR)	0	<u>PKPK_RPM</u> (Stick_RT) (RPM)	0	500	0.2	<u>ARC BHCorr Phase-Shift Resistivity 16-in. at 2 MHz, Real-Time (P16H_RT)</u> (OHMM)	2000	-0.75	<u>Bulk Density Correction, Bottom, Real-Time Computed Downhole (DRHB_DH_RT)</u> (G/C3)	0.25	600	<u>Delta-T Compressional, Real-Time (DTCO_RT)</u> (US/M)	100
6	<u>Average Borehole Diameter, Real-Time (ADIA_ADN_RT)</u> (IN)	16	<u>MWD Collar RPM (CRPM_RT)</u> (RPM)	0	250	0.2	<u>ARC BHCorr Phase-Shift Resistivity 28-in. at 2 MHz, Real-Time (P28H_RT)</u> (OHMM)	2000	0	<u>Photoelectric Factor, Bottom, Real-Time (PEB_RT)</u> (----)	10			
0	<u>ARC Gamma Ray, Real-Time (ARC_GR_RT)</u> (GAPI)	200				0.2	<u>ARC BHCorr Phase-Shift Resistivity 40-in. at 2 MHz, Real-Time (P40H_RT)</u> (OHMM)	2000	1.85	<u>Bulk Density, Bottom, Real-Time Computed Downhole (ROBB_DH_RT)</u> (G/C3)	2.85			
									45	<u>Thermal Neutron Porosity, Real-Time (TNPH_ADN_RT)</u> (PU)	-15			

IDEAL Version: ID14_0C_11

IDF

ARC6A-AA
SON675

id14_0c_11
id14_0c_11

MWD_10
ADN

id14_0c_11
id14_0c_11